



Data Migration into SAP

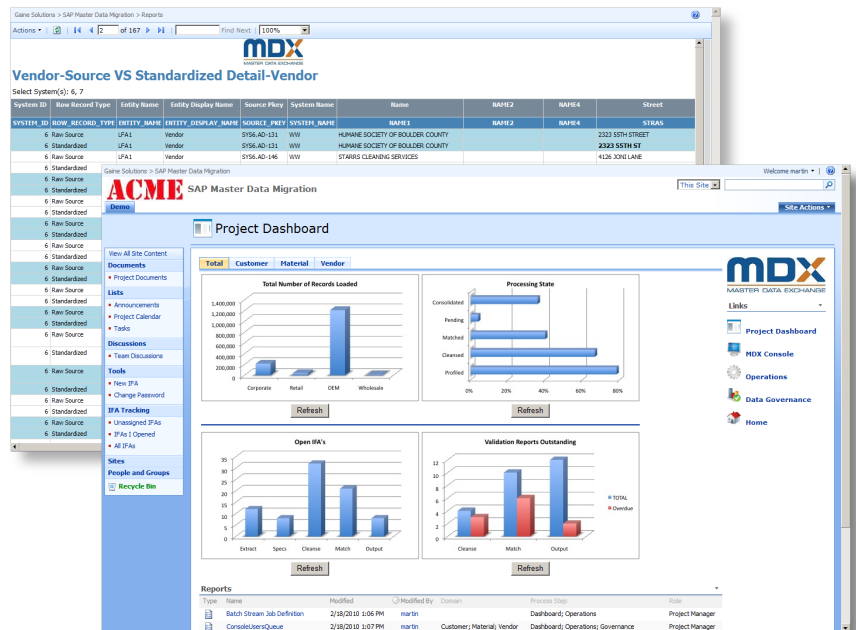
Accelerate the Implementation of SAP

Reliable and accurate Master Data is critical to the successful implementation and operation of SAP. Poor quality Master Data impacts almost every aspect of company operations; failing to address data quality when implementing SAP represents a significant business risk.

Master Data eXchange (MDX) from Gainé Solutions Inc. reduces the time, cost and risk of migrating data from legacy systems into SAP.

MDX provides all of the tools necessary to produce high-quality data for SAP including data profiling, data validation, data cleansing and de-duplication. The MDX platform integrates these data migration components with a unique repository and a process management engine embedded in Microsoft SharePoint.

The MDX environment is pre-configured for SAP and contains an extensive set of rules to cleanse and transform data irrespective of format or source.



Why use MDX ?

Quality is a factor of time not technology. The MDX Data Migration portal reduces the time required from business users to validate data, provide input and request specification changes.

Trust comes from visibility; Within MDX, every change to business data or specification is tracked and completely auditable.

Control of specifications, meta-data and business data is managed by MDX in a version controlled repository. Impact analysis is automated and integrated with an Issue Management system.

Implementation Cost is significantly reduced. MDX is provided as a service with no capital costs for hardware or data migration software. MDX will shorten project time and optimize the use of business resources which further reduces project costs.

Maximize ROI and reap the full benefits of SAP on Windows with clean, reliable Master Data.

Time to Value is reduced through the pre-configured environment for SAP. There is no software or hardware to purchase or implement.

Key Features

Version Control

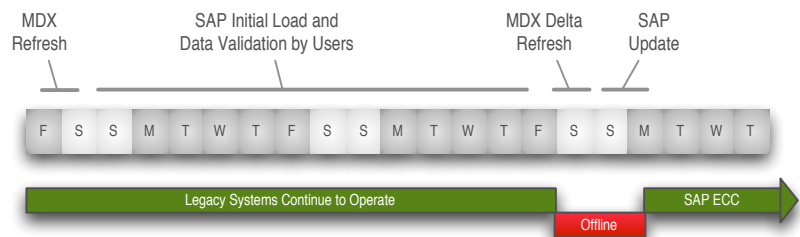
As a result of changes to the ongoing legacy process, refinements to the SAP design and newly discovered exceptions in the data, an SAP specification continues to evolve throughout a project. Indeed, it is not unusual for an SAP specification to undergo hundreds of changes over the course of an implementation. The MDX platform manages changes to specifications, meta-data and business data within a single repository. MDX provides an audit trail and impact analysis of all changes, a Microsoft SharePoint collaboration portal and an automated refresh of the staging environment once the changes are completed.

Coordination of Multiple Technologies

The cleansing and enhancement of Master Data may incorporate manual updates in spreadsheets, external reference data, custom database code and specialist cleansing tools. The MDX platform provides coordination of all cleansing activities in a single workflow. This coordination allows each group within the business to apply their knowledge in the most efficient manner possible, without sacrificing the control and automation that is critical when reloading data during testing and go-live.

Minimal Shut Down at Go-Live

Minimizing the period that the business is “frozen” before go-live is critical to many businesses. MDX provides delta-detection and impact analysis capabilities so that, during the period required to initially load and validate SAP, the enterprise can continued to operate it’s existing systems without any restrictions on new data entry. Once the data is validated in the new SAP system, the Master Data from legacy systems can be refreshed and only the records that result in SAP updates are passed on to SAP by MDX. This limited update to SAP can be completed in a fraction of the time required for a full load and business down-time is minimized.



Single Point of Audit

Master Data is typically drawn from multiple systems that span organizational and geographic boundaries. Data is touched many times by many people over the course of a project. MDX provides a single repository that tracks “Who”, “When” and “Why” changes are made to Master Data. This audit trail is critical during testing and validation to maintain user confidence and understanding of the resulting business data.

Integrated Collaboration

Preparing Master Data requires the coordinated efforts of multiple stakeholders. MDX provides an integrated collaboration portal in Microsoft SharePoint to manage the exchange of information across the project team.